



Government of India
Ministry of Earth Sciences
India Meteorological Department



Press Release

Date: 15th July, 2025

Time of Issue: 1330 hours IST

Subject: i) A Depression over central parts of north Rajasthan and a well marked low pressure area over north Jharkhand & adjoining south Bihar.
ii) Heavy to very heavy rainfall likely to continue over Rajasthan; East & adjoining Central India during next 2-3 days.

Realised weather during past 24 hours till 0830 hours IST of today, the 15th July, 2025:

- ❖ **Heavy to very heavy rainfall (7-20 cm)** has been recorded at isolated places over West Bengal, Jharkhand, Odisha, Kerala, Coastal Karnataka, Jammu-Kashmir, Rajasthan, Konkan, Madhya Maharashtra, Assam; **Heavy rainfall (7-11 cm)** at isolated places over Tamil Nadu, South Interior Karnataka, Bihar, East Uttar Pradesh, East Madhya Pradesh, Chhattisgarh, Gujarat Region, Punjab, Goa, Sikkim, Arunachal Pradesh and Mizoram.
- For more details of realised weather, kindly refer [Annexure I](#).**

i. Weather Systems, Forecast and Warnings (refer to [Annexure II & III](#)):

- ❖ The **Monsoon trough** is active with its western end runs to the south of its normal position and eastern end near its normal position at mean sea level.
- ❖ Yesterday's **well marked Low Pressure area over northeast Rajasthan & adjoining northwest Madhya Pradesh** moved slowly west-northwestwards and lay over Northeast Rajasthan at 1730 hrs IST; over central parts of North Rajasthan at 2330 hrs IST. It lay over central parts of North Rajasthan at 0530 hrs IST of today and moved slowly west-northwestwards, concentrated into a **depression** and lay centred at 0830 hrs IST of today, the 15th July, 2025 over the same region, near latitude 27.4°N and longitude 75.4°E, about 40 km southeast of Sikar and 110 km south-southeast of Churu. It is likely to continue to move slowly west-northwestwards across north Rajasthan during next 24 hours.
- ❖ Yesterday's low pressure area southeast Gangetic West Bengal and adjoining Bangladesh concentrated into a Depression over the same area at 1130 hrs IST; lay over central parts of Gangetic West Bengal at 2330 hrs IST. It moved west-northwestwards and lay over Jharkhand & neighbourhood at 0530 hrs IST of today, the 15th July moving west-northwestwards, weakened into a well marked low pressure area and lay over north Jharkhand and adjoining south Bihar at 0830 hrs IST of today, the 15th July 2025. It is likely to move further west-northwestwards across Jharkhand and south Bihar towards east Uttar Pradesh during next 24 hours.
- ❖ A **Western Disturbance** as a trough in middle tropospheric levels runs roughly along Long. 66°E to the north of Lat. 28°N.

Under the influence of these systems, the following weather is likely:

Northwest India:

- ✓ Isolated **heavy rainfall** likely over Jammu & Kashmir, Himachal Pradesh, Uttarakhand, East Uttar Pradesh during 15th-21st; Punjab during 15th-17th and 21st; Haryana on 17th & 21st; West Uttar Pradesh during 16th-21st; Rajasthan during 15th-17th July with **very heavy rainfall over Jammu & Kashmir, East Rajasthan on 15th & 16th; Uttarakhand on 17th, 20th & 21st; West Rajasthan on 15th; East Uttar Pradesh on 16th & 17th July.**
- ✓ Light/moderate rainfall at most/many places accompanied with thunderstorm, lightning likely over western Himalayan region and some/many places over the plains during next 7 days.

East & Central India:

- ✓ Isolated **heavy rainfall** very likely to continue over Madhya Pradesh during 15th-19th, Chhattisgarh, Bihar, Jharkhand during 15th-17th, Andaman & Nicobar Islands on 15th & 16th; Odisha, Sub-Himalayan West Bengal & Sikkim on 15th, 16th and during 19th-21st; Gangetic West Bengal on 15th July **with very heavy rainfall over West**

Madhya Pradesh on 18th, East Madhya Pradesh on 16th & 17th, Sub-Himalayan West Bengal & Sikkim, Odisha, Chhattisgarh on 15th; Bihar and Jharkhand on 15th & 16th July.

- ✓ Light/moderate rainfall at most/many places accompanied with thunderstorm & lightning likely over the region during next 7 days.

West India:

- ✓ **Heavy rainfall** likely at isolated places over Konkan & Goa, Ghat areas of Madhya Maharashtra on 15th; 20th & 21st; Goa on 16th & 19th; Gujarat Region on 15th July **with very heavy rainfall** over Konkan and ghat areas of Madhya Maharashtra on 15th July.
- ✓ Light/moderate rainfall at many/some places very likely over the region during next 5 days.

Northeast India:

- ✓ Light/moderate rainfall at many places accompanied with **thunderstorm, lightning** likely to continue over Northeast India during next 7 days.
- ✓ Isolated **heavy rainfall** very likely over Assam & Meghalaya, Arunachal Pradesh, Mizoram & Tripura on 15th & 16th and during 19th-21st July.

South Peninsular India:

- ✓ Isolated **heavy to very heavy rainfall** likely over Kerala & Mahe, Tamil Nadu, Coastal & South Interior Karnataka during 15th-21st; isolated **heavy rainfall** over North Interior Karnataka on 15th & 16th; Lakshadweep on 19th & 20th; Coastal Andhra Pradesh & Yanam during 17th-21st; Rayalaseema during 17th-19th and Telangana on 17th & 18th July.
- ✓ **Strong surface winds** (speed reaching 40-50 kmph) very likely over South Peninsular India during next 5 days.
- ✓ Light/moderate rainfall at many/some places over Kerala & Mahe, Lakshadweep, Karnataka, Rayalaseema; isolated to scattered rainfall over Coastal Andhra Pradesh & Yanam, Telangana during next 7 days.

Hot & Humid weather Warnings:

Hot & Humid weather conditions very likely in isolated pockets of Tamil Nadu on 15th; Coastal Andhra Pradesh & Yanam and Rayalaseema on 15th & 16th July.

Fishermen Warnings:

Fishermen are advised to avoid venturing into the following from 15th July to 20th July 2025 to the following Areas:

Arabian Sea: Along and off Konkan, Goa coasts for 15th July; along and off Kerala, Karnataka coasts, over Lakshadweep, Comorin areas; along and off the Somalia coast and adjoining sea areas, Oman and adjoining Yemen coast & adjoining sea areas; northern parts of south Arabian Sea during 15th to 20th July; most parts of central Arabian Sea and adjoining south and north Arabian Sea for 15th to 19th July

Bay of Bengal:

Few parts of westcentral Bay of Bengal for 15th to 19th July, some parts of westcentral Bay of Bengal for 19th July; some parts of southwest Bay of Bengal for 15th July, many parts of southwest Bay of Bengal for 16th to 19th July, most parts of southwest Bay of Bengal on 19th July; southeast Bay of Bengal adjoining to southwest Bay of Bengal for 15th to 18th July, some parts of southeast Bay of Bengal for 18th July, most parts of southeast Bay of Bengal for 19th July; Over Gulf of Mannar for day 1 to day 5 (15th to 20th July); Over Andaman Sea for 18th & 19th July.

Total suspension of fishing operations is suggested over above mentioned areas and dates.

ii. Weather conditions and forecast over Delhi/NCR during 15th to 18th July, 2025 (Annexure IV)

For more details, kindly refer National Weather Bulletin:

https://mausam.imd.gov.in/responsive/all_india_forecast_bulletin.php

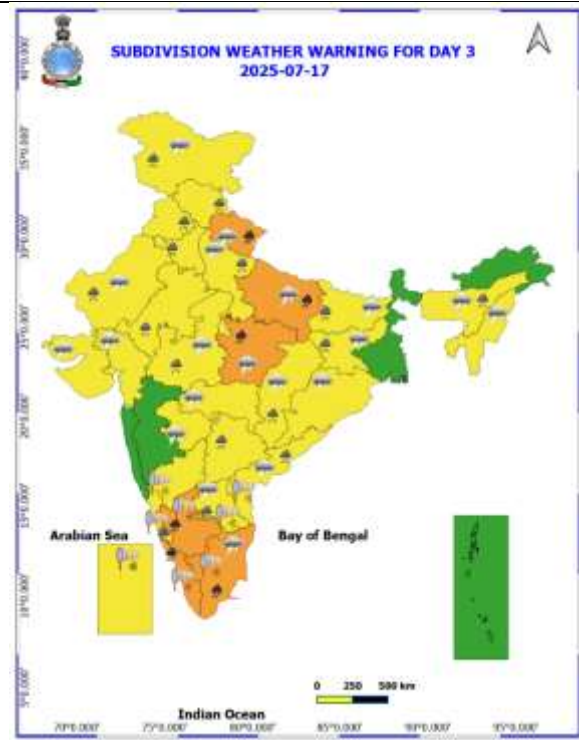
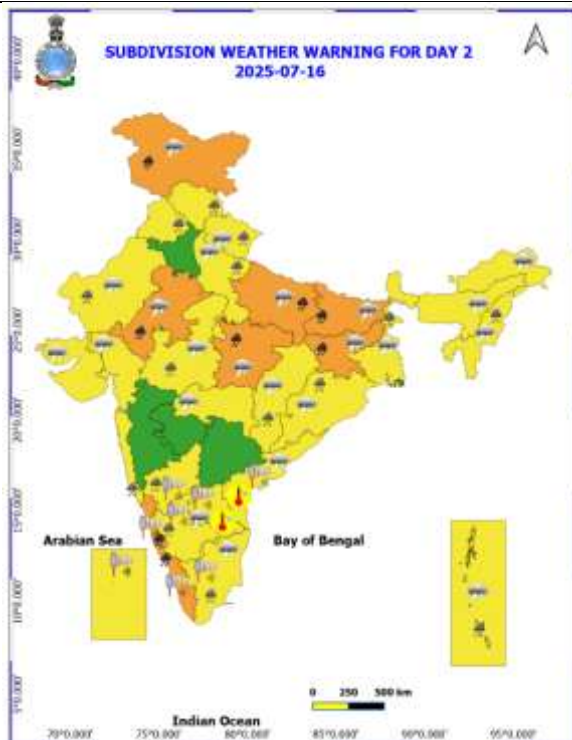
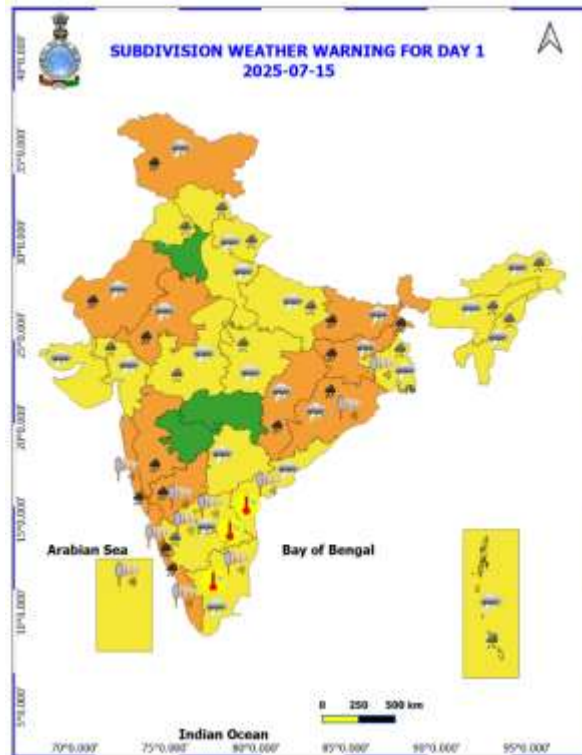
For District wise warnings refer: <https://mausam.imd.gov.in/responsive/districtWiseWarningGIS.php>

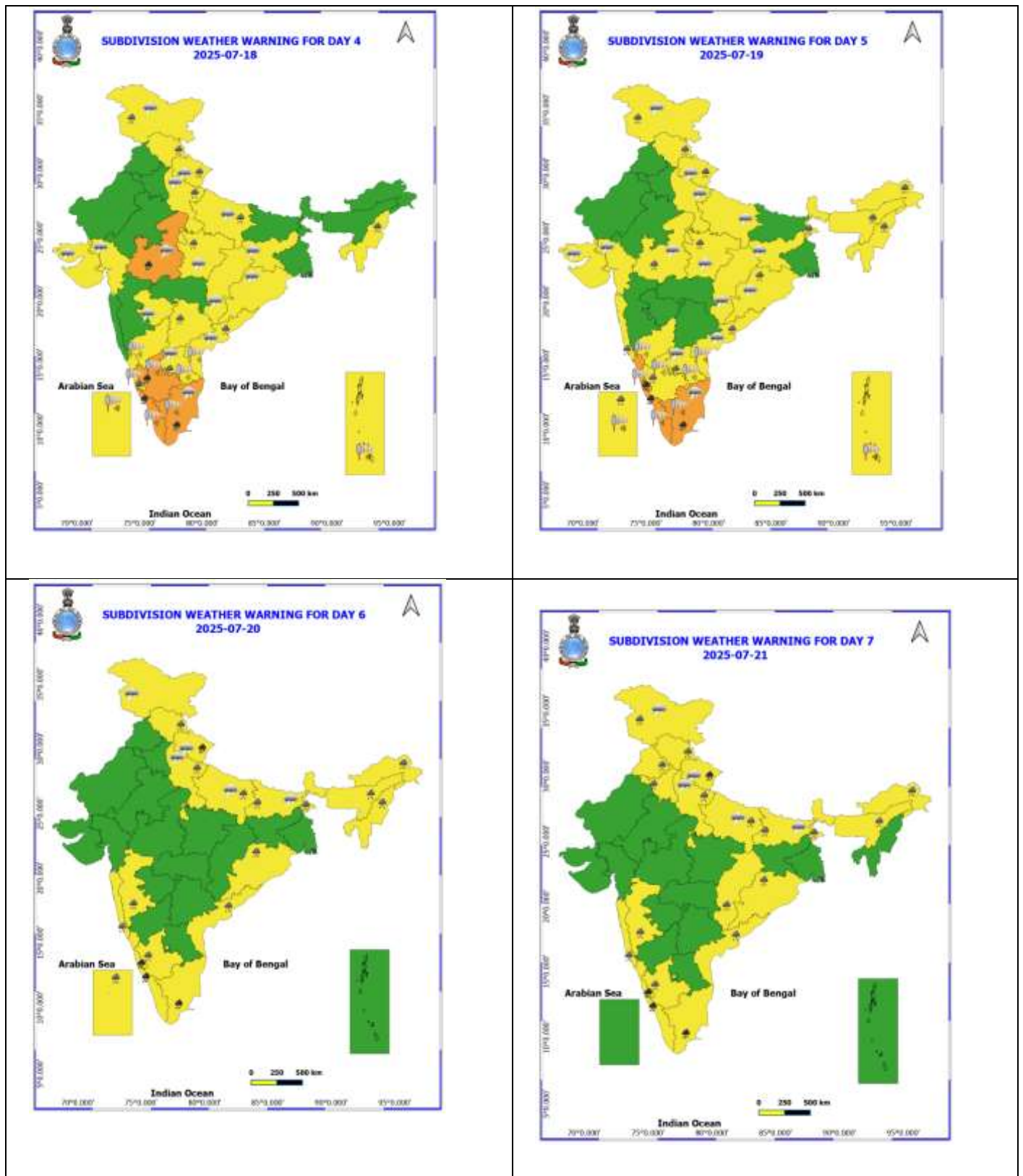
Rainfall recorded (in cm) during past 24 hours till 0830 hours IST of today, the 15th July:

- ❖ **Konkan & Goa:** Savarde-arg (dist Ratnagiri) 19; Sudhagad Pali (dist Raigad), Chiplun (dist Ratnagiri), Rajapur (dist Ratnagiri) 14 Each; Mandangad (dist Ratnagiri), Mhasla (dist Raigad) 13 Each; Guhagarh (dist Ratnagiri), Roha (dist Raigad), Dodamarg (dist Sindhudurg) 12 Each; Mangaon (dist Raigad), Shriwardhan (dist Raigad), Ratnagiri (dist Ratnagiri), Sawantwadi (dist Sindhudurg), Sangameshwar Devrukh (dist Ratnagiri), Lanja (dist Ratnagiri) 11 Each; Kudal (dist Sindhudurg), Dapoli ARG (dist Ratnagiri), Poladpur (dist Raigad) 10 Each; Harnai IMD (dist Ratnagiri), Pen (dist Raigad), Tala (dist Raigad) 9 Each; Matheran (dist Raigad), Murud (dist Raigad), Ponda (dist North Goa), Canacona (dist South Goa), Awalegaon - ARG (dist Sindhudurg), Wakwali ARG (dist Ratnagiri), Quepem (dist South Goa) 8 Each; Sanguem (dist South Goa), Khed (dist Ratnagiri), Kankavli (dist Sindhudurg) 7 Each;
- ❖ **Jharkhand:** Rajmahal (dist Sahibganj) 19; Maharo (dist Dumka) 14; Zrs Dumka (dist Dumka) 12; Daltonganj (dist Palamu), Maheshpur (dist Pakur), Messenjoy (dist Dumka), Manoharpur (dist West Singhbhum), Goilkeria (dist West Singhbhum) 9 Each; Jamshedpur AP (dist East Singhbhum), Chandil (dist Seraikela-kharsawan), Rajdhanwar (dist Giridih), Chandrapura (dist Bokaro), Anandpur (dist West Singhbhum), Sisai (dist Gumla), Chainpur (dist Palamu), Manoharpur Phc (dist West Singhbhum) 8 Each; Chaibasa (dist West Singhbhum), Amrapara (dist Pakur), Jamshedpur (dist East Singhbhum), Bokaro Thermal (dist Bokaro), Gudri (dist West Singhbhum), Chakulia (dist East Singhbhum), Boram (dist East Singhbhum) 7 Each;
- ❖ **East Rajasthan:** Bijoliya SR (dist Bhilwara) 18; Bhainsroadgarh SR (dist Chittorgarh) 17; Niwai (dist Tonk) 13; Mandana SR (dist Kota) 12; Sambhar SR (dist Jaipur) 10; Rajsamand (dist Rajsamand), Naraina SR (dist Jaipur) 9 Each; Chothkabarwara SR (dist Sawai Madhopur) 8; Deogarh (dist Rajsamand), Malpura (dist Tonk), Veja SR (dist Dungarpur), Tonk Tehsil SR (dist Tonk), Lachmangarh (dist Sikar), Mavli (dist Udaipur), Piplu SR (dist Tonk), Chomu (dist Jaipur) 7 Each;
- ❖ **Coastal Karnataka:** Mulki (dist Dakshina Kannada) 17; Castle Rock (dist Uttara Kannada) 14; Shakti Nagar (dist Dakshina Kannada) 12; Mangaluru AP (dist Dakshina Kannada), Bantwal (dist Dakshina Kannada), Kadra (dist Uttara Kannada), Kundapur (dist Udupi) 11 Each; Kota (dist Udupi) 10; Manki (dist Uttara Kannada) 9; Ankola (dist Uttara Kannada), Shirali PTO (dist Uttara Kannada), Sulya (dist Dakshina Kannada) 8 Each; Mani (dist Dakshina Kannada), Siddapura (dist Udupi), Gokarna (dist Uttara Kannada) 7 Each;
- ❖ **Jammu-KashmirLadakh-Gilgit-Baltistan-Muzaffarabad:** Udhampur(IAF) (dist Udhampur) 15;
- ❖ **Madhya Maharashtra:** Mahabaleshwar (dist Satara) 15; Gaganbawada (dist Kolhapur) 13; Radhanagari (dist Kolhapur) 12; Shahuwadi (dist Kolhapur), Lonavala ARG (dist Pune) 10 Each; Igatpuri (dist Nashik) 8;
- ❖ **Gangetic West Bengal:** Debagram (dist Nadia) 14; Tusuma (dist Purulia) 9; Midnapore (dist West Midnapore), Kharidwar (dist Purulia), Hetampur (dist Birbhum), Berhampore (dist Murshidabad) 8 Each; Kansabati Dam (dist Bankura), Rampurhat (DRMS) (dist Birbhum), Phulberia (dist Purulia), Midnapore(CWC) (dist West Midnapore), Jangipur (dist Murshidabad) 7 Each;
- ❖ **West Rajasthan:** Makrana SR (dist Nagaur) 14; Degana (dist Nagaur) 12; Parbatsar (dist Nagaur), Nawa (dist Nagaur) 11 Each; Pali (dist Pali) 9; Ratangarh (dist Churu), Anupgarh Tehsil SR (dist Sri Ganganagar) 8 Each; Padampur (dist Sri Ganganagar), Sedwa SR (dist Barmer) 7 Each;
- ❖ **Kerala & Mahe:** Kudulu (dist Kasargod) 12; Muliya AWS (dist Kasargod) 11; Bayar AWS (dist Kasargod) 10; Hosdurg (dist Kasargod), Panathur AWS (dist Kasargod) 9 Each;
- ❖ **Odisha:** Telkoi (dist Keonjhar) 12; Rajgangpur (dist Sundargarh) 11; Bargaon (dist Sundargarh), Reamal (dist Deogarh) 10 Each; Tensa (dist Sundargarh), Barkote (dist Deogarh), Banspal (dist Keonjhar), Kutra (dist Sundargarh) 9 Each; Batagaon (dist Sambalpur), Chendipada (dist Angul), Baripada (dist Mayurbhanj), Mandira Dam (dist Sundargarh), Lathikata (dist Sundargarh) 8 Each; Samakhunta (dist Mayurbhanj), Anandpur (dist Keonjhar), Hatadihi (dist Keonjhar), Khaira (dist Balasore), Ghasipura (dist Keonjhar) 7 Each;
- ❖ **Assam & Meghalaya:** Khowang (dist Dibrugarh) 12;
- ❖ **Sub Himalayan West Bengal & Sikkim:** Amfu Kalimpong (dist Kalimpong) 12; Kalimpong (dist Kalimpong), Ghatia T.e. (dist Jalpaiguri) 11 Each; Hilla T.e. (dist Jalpaiguri), Kurti T.e. (dist Jalpaiguri) 10 Each; Buxaduar (dist Alipurduar), Malda (dist Malda), Indong T.e. (dist Jalpaiguri), Lava (dist Kalimpong) 9 Each; Chengmari/Diana (dist Jalpaiguri), Bhagatpur Tea Estate (dist Jalpaiguri), Chalouni Tea Estate (dist Jalpaiguri) 8 Each; Darjeeling (dist Darjeeling), Rongo (dist Kalimpong), Chel (dist Jalpaiguri), Tra Nagrakata (dist Jalpaiguri), Zurrantee T.e (dist Jalpaiguri), Nagarkata (dist Jalpaiguri) 7 Each;
- ❖ **Punjab:** Bhatinda IAF (dist Bhatinda) 11; Bhatinda AMFU (dist Bhatinda) 9; Faridkot (dist Faridkot) 7;
- ❖ **East Uttar Pradesh:** Chhibramau (dist Kannauj) 9;
- ❖ **South Interior Karnataka:** Agumbe AWS (dist Shivamogga) 9;
- ❖ **West Uttar Pradesh:** Karhal (dist Mainpuri) 8;
- ❖ **Chhattisgarh:** Latori (dist Surajpur) 8; Chando (dist Balrampur) 7;
- ❖ **Gujarat Region:** Vandsa (dist Navsari) 8; Saraswati (dist Patan), Dediapada (dist Narmada) 7 Each;
- ❖ **East Madhya Pradesh:** Sidhi (gopadbanas) (dist Sidhi) 7;
- ❖ **North Interior Karnataka:** Londa (dist Belagavi) 7;
- ❖ **Arunachal Pradesh:** Deomali AWS (dist Tirap) 7;
- ❖ **Bihar:** Sangrampur (dist Monghyr), Amdabad (dist Katihar) 7 Each.

Table-1								
7 Days Rainfall Forecast								
S.No.	Subdivision	15- Jul	16- Jul	17- Jul	18- Jul	19- Jul	20- Jul	21- Jul
		Day 1	Day 2	Day 3	Day 4	Day 5	Day 6	Day 7
1	ANDAMAN & NICOBAR ISLANDS	WFS	WFS	WFS	WFS	WFS	WFS	WFS
2	ARUNACHAL PRADESH	FWS	SCT	SCT	SCT	FWS	WFS	WFS
3	ASSAM & MEHGHALAYA	FWS	FWS	SCT	SCT	FWS	FWS	FWS
4	NAGALAND, MANIPUR, MIZORAM AND TRIPURA	FWS	FWS	SCT	SCT	FWS	FWS	FWS
5	SUB HIMALAYAN WEST BENGAL & SIKKIM	WFS	WFS	FWS	SCT	WFS	WFS	WFS
6	GANGETIC WEST BENGAL	WFS	WFS	FWS	SCT	SCT	SCT	FWS
7	ODISHA	FWS	FWS	SCT	SCT	FWS	FWS	FWS
8	JHARKHAND	WFS	WFS	FWS	FWS	SCT	FWS	FWS
9	BIHAR	WFS	FWS	SCT	ISOL	ISOL	SCT	SCT
10	EAST UTTAR PRADESH	FWS	FWS	WFS	SCT	SCT	SCT	SCT
11	WEST UTTAR PRADESH	SCT	FWS	FWS	FWS	SCT	FWS	FWS
12	UTTARAKHAND	FWS	FWS	FWS	FWS	FWS	WFS	WFS
13	HARYANA, CHANDIGARH & DELHI	SCT	SCT	FWS	SCT	ISOL	ISOL	SCT
14	PUNJAB	SCT	SCT	FWS	SCT	ISOL	ISOL	SCT
15	HIMACHAL PRADESH	FWS	WFS	WFS	WFS	FWS	FWS	WFS
16	JAMMU AND KASHMIR AND LADAKH	WFS	WFS	WFS	WFS	WFS	SCT	WFS
17	WEST RAJASTHAN	FWS	SCT	SCT	SCT	ISOL	ISOL	ISOL
18	EAST RAJASTHAN	FWS	FWS	FWS	FWS	SCT	ISOL	SCT
19	WEST MADHYA PRADESH	FWS	FWS	WFS	WFS	SCT	SCT	SCT
20	EAST MADHYA PRADESH	WFS	WFS	WFS	WFS	FWS	FWS	FWS
21	GUJRAT REGION	FWS	SCT	SCT	SCT	SCT	SCT	ISOL
22	SAURASHTRA & KUTCH	SCT	ISOL	ISOL	SCT	SCT	SCT	ISOL
23	KONKAN & GOA	WFS	WFS	FWS	FWS	FWS	FWS	WFS
24	MADHYA MAHARASHTRA	FWS	SCT	ISOL	ISOL	SCT	ISOL	ISOL
25	MARATHWADA	ISOL	ISOL	SCT	ISOL	ISOL	ISOL	ISOL
26	VIDARBHA	FWS	FWS	FWS	SCT	SCT	SCT	SCT
27	CHHATTISGARH	FWS	FWS	FWS	SCT	SCT	SCT	FWS
28	COASTAL ANDHRA PRADESH	ISOL	ISOL	SCT	FWS	FWS	FWS	SCT
29	TELANGANA	ISOL	SCT	FWS	FWS	FWS	SCT	SCT
30	RAYALASEEMA	ISOL	ISOL	SCT	WFS	FWS	FWS	FWS
31	TAMILNADU & PUDUCHERRY	ISOL	SCT	SCT	SCT	SCT	SCT	SCT
32	COSTAL KARNATAKA	WFS	WFS	WFS	WFS	WFS	WFS	WFS
33	NORTH INTERIOR KARNATAKA	SCT	SCT	FWS	WFS	FWS	SCT	SCT
34	SOUTH INTERIOR KARNATAKA	FWS	FWS	WFS	WFS	WFS	WFS	WFS
35	KERALA AND MAHE	WFS	WFS	WFS	WFS	WFS	WFS	WFS
36	LAKSHADWEEP	WFS	WFS	WFS	WFS	WFS	WFS	WFS

- As the lead period increases forecast accuracy decrease.





- Action may be taken based on ORANGE AND REDCOLOUR warnings.
- Vulnerable regions likely urban and hilly areas action may be initiated for heavy rainfall warning.
- As the lead period increases forecast accuracy decreases.

Detailed districtwise Multi Hazard weather warning for next five days available at <https://mausam.imd.gov.in/responsive/districtWiseWarningGIS.php>

Weather forecast over Delhi/NCR during 15th to 18th July 2025**Past Weather:**

There has been rise in the minimum temperature up to 1°C and fall in maximum temperature up to 1°C over Delhi/NCR during the past 24 hours. The maximum and minimum temperatures over Delhi were around 32 to 33°C and 23 to 25°C respectively. The minimum temperature was below normal up to 2 to 3°C and the maximum temperature was below normal up to 2 to 4°C. Generally cloudy sky conditions with predominant surface wind from the southeast/northeast direction with wind speeds up to 20 kmph with gusting to 35 kmph prevailed during the past 24 hours. Light rainfall has been recorded in most places with isolated places moderate rainfall over Delhi. Generally cloudy sky conditions with a windspeed of less than 16 kmph from the east direction prevailed over the region in the forenoon today.

Weather Forecast:

15.07.2025: Generally cloudy sky. Very light to light rain accompanied with thunderstorms/lightning. Occasionally strong surface winds 20- 30 kmph gusting to 40 kmph. The maximum temperatures over Delhi are likely to be in the range of 32 to 34°C. The maximum temperature will be below normal up to 1 to 2°C. The predominant surface wind will likely be from the southeast direction with a wind speed of less than 25 kmph in the afternoon. The wind speed will gradually decrease becoming 10-15 kmph from the southeast direction during evening and night.

16.07.2025: Generally cloudy sky. Light to moderate rain accompanied with thunderstorms/lightning. The maximum and minimum temperatures over Delhi are likely to be in the range of 31 to 33°C and 23 to 25°C respectively. The minimum temperature will be below normal up to 2 to 4°C, and the maximum temperature will be below normal up to 2 to 4°C. The predominant surface wind will likely be from the southeast direction with a wind speed of less than 20 kmph during the morning hours. The wind speed will gradually increase becoming less than 25 kmph from the southeast direction in the afternoon. It will decrease becoming less than 15 kmph from the southeast direction during the evening and night.

17.07.2025: Partly cloudy sky. Very light to light rain accompanied with thunderstorms/lightning. The maximum and minimum temperatures over Delhi are likely to be in the range of 32 to 34°C and 24 to 26°C respectively. The minimum temperature will be below normal up to 1 to 3°C, and the maximum temperature will be below normal up to 1 to 2°C. The predominant surface wind will likely be from the southeast direction with a wind speed of less than 10 kmph during the morning hours. The wind speed will gradually increase becoming less than 15 kmph from the southeast direction in the afternoon. It will decrease becoming less than 12 kmph from the southeast direction during the evening and night.

18.07.2025: Partly cloudy sky. Very light to light rain accompanied with thunderstorms/lightning. The maximum and minimum temperatures over Delhi are likely to be in the range of 33 to 35°C and 24 to 26°C respectively. The minimum temperature will be below normal up to 1 to 2°C and the maximum temperature will be below normal up to 1 to 2°C. The predominant surface wind will likely be from the southwest direction with a wind speed of less than 10 kmph during the morning hours. The wind speed will gradually increase becoming less than 15 kmph from the southeast direction in the afternoon. It will decrease becoming less than 10 kmph from the east direction during the evening and night.

Impact expected and Action Suggested due to light rainfall with thunderstorm/lightning:

- Be cautious and take precautionary measures, though there is the likelihood of thunderstorms/lightning.
- Damage to standing crops, Minor to major damage to power and communication lines due to breaking of branches, Partial damage to vulnerable structures due to strong winds, Loose objects may fly.
- People are advised to keep a watch on the weather for worsening conditions and be ready to move to safer places accordingly, stay indoors, close windows & doors and avoid travel if possible, take safe shelters; do not take shelter under trees, do not lie on concrete floors and do not lean against concrete walls, unplug electrical/ electronic appliances, immediately get out of water bodies, keep away from all the objects that conduct electricity.

Impact & Action Suggested

- ✓ **Very heavy rainfall very likely at isolated places over** Jammu & Kashmir, East Rajasthan, Bihar and Jharkhand on 15th & 16th; Uttarakhand on 17th, 20th & 21st; West Rajasthan, Konkan and ghat areas of Madhya Maharashtra, Sub-Himalayan West Bengal, Odisha, Chhattisgarh on 15th; East Uttar Pradesh on 16th & 17th July. West Madhya Pradesh on 18th, East Madhya Pradesh on 16th & 17th, Kerala & Mahe, Tamil Nadu, Coastal & South Interior Karnataka during 15th-21st July.

Impact Expected

- Localized Flooding of roads, water logging in low lying areas and closure of underpasses mainly in urban areas of (**Rajasthan and West Madhya Pradesh**) the above region.
- Occasional reduction in visibility due to heavy rainfall.
- Disruption of traffic in major cities due to water logging in roads leading to increased travel time.
- Minor damage to kutch roads.
- Possibilities of damage to vulnerable structure.
- Localized Landslides/Mudslides/landslips/mudslips/landsinks/mudsinks.
- Damage to horticulture and standing crops in some areas due to inundation.
- It may lead to riverine flooding in some river catchments (for riverine flooding please visit Web page of CWC)

Action Suggested

- Check for traffic congestion on your route before leaving for your destination.
- Follow any traffic advisories that are issued in this regard.
- Avoid going to areas that face the water logging problems often.
- Avoid staying in vulnerable structure.

Agromet advisories for likely impact of Heavy / Heavy to Very Heavy Rainfall

- In **Rajasthan**, make provision to drain out excess water from rice nurseries and fields of maize, soybean and black gram in **Southeastern Humid Plain Zone**, fields of pearl millet, sesame, black gram and vegetables in **Flood Prone Eastern Plain Zone**, soybean, maize, cotton and groundnut fields in **Southern Humid Plain Zone**, pearl millet and groundnut fields in **Semi Arid Eastern Plain Zone**, maize and soybean fields in **Sub Humid Southern Plain and Aravali Hill Zone** and green gram, cluster bean and sesame in **Arid Western Plain Zone**.
- In **Jammu & Kashmir**, provide adequate drainage facilities in fields of maize and transplanted rice in **Sub Tropical Zone** and maize fields in **Intermediate Zone**.
- In **Uttarakhand**, ensure proper drainage facilities in soybean, maize, barnyard millet, finger millet, pigeon pea, kidney beans, vegetables and orchards. Harvest matured vegetables and fruits and store in safe place.
- In **Madhya Pradesh**, make provision to drain out excess water from rice nurseries and fields of soybean, maize and vegetables in **Kymore Plateau and Satpura Hill Zone** and soybean and pearl millet in **Malwa Plateau Zone** and **Gird Zone**.
- In **Chhattisgarh**, make arrangements for drainage of excess water from fields of rice, maize, pigeon pea, minor millets and vegetables. Provide mechanical support to tall/weak crops with stakes or bamboo to prevent lodging or breakage.
- In **West Bengal**, ensure proper drainage facilities in fields of rice and *kharif* groundnut in **Laterite and Red Soil Zone**, sesame, jute and groundnut in **New Alluvial Zone** and finger millet, soybean, ginger, turmeric, vegetables and fruit orchards in **Hill Zone**.
- In **Odisha**, drain out excess water from rice nurseries and transplanted rice fields, maize, vegetables and banana plantations in **North Central Plateau Zone**, rice nurseries and transplanted rice fields, maize, pulses and vegetables in **North Eastern Plateau Zone**, rice nurseries, vegetables and fruit orchards in **North Eastern Coastal Plain Zone** and rice nurseries and transplanted rice fields, maize, vegetables and fruit orchards in **West Central Table land Zone**.
- In **Jharkhand**, make necessary arrangements to drain out excess water from maize fields, rice and vegetable nurseries. Cover the vegetable nurseries with polythene sheets.
- In **Konkan**, make arrangement to drain out excess water from rice and finger millet nurseries, groundnut, vegetables and orchards. In *ghat* areas of **Madhya Maharashtra** drain out excess water from rice and finger millet nurseries.

- In **Coastal Karnataka**, drain out excess water from rice nurseries, transplanted rice fields and plantations of arecanut and coconut in **Coastal Zone** and from rice nurseries and fields of maize, cotton and ginger and plantations of arecanut in **Hill Zone**.
- In **Kerala**, ensure proper drainage facilities in rice nurseries, transplanted rice fields, coconut and banana plantations to prevent water logging. Undertake propping in banana to protect the plants from heavy rains.

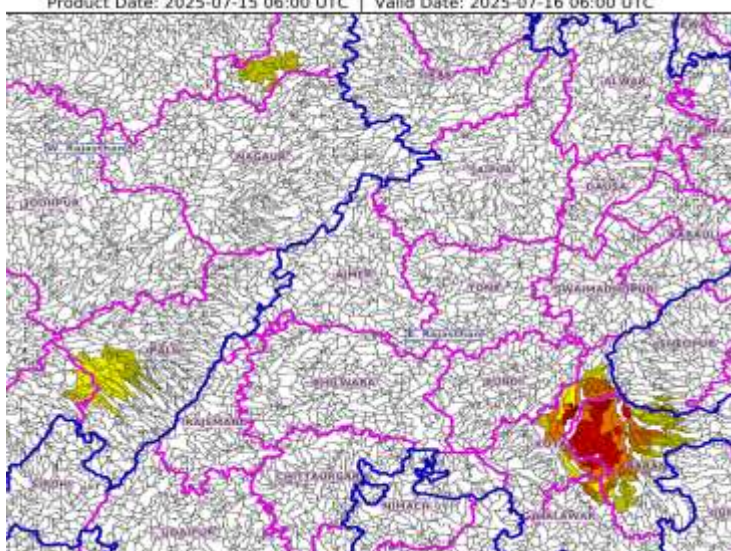
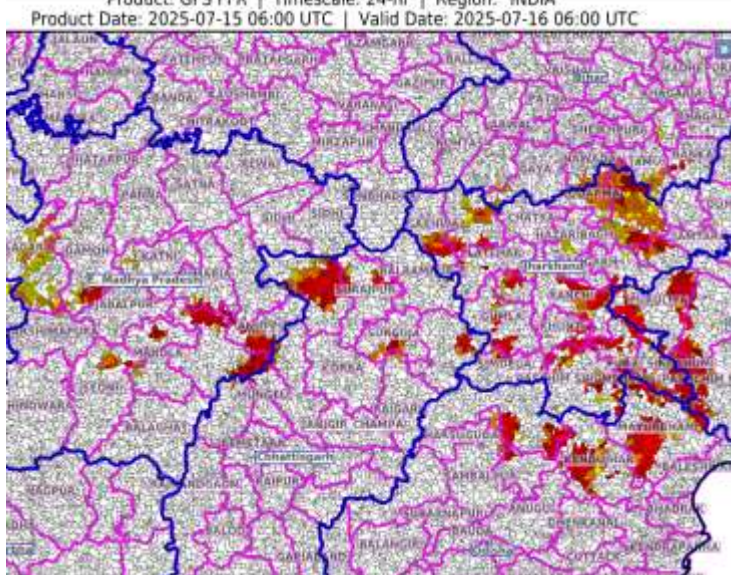
Livestock / Fishery

- Keep the animals inside the shed during heavy rainfall and provide them balanced feed.
- Store feed and fodder in a safe place to prevent spoilage.
- Construct an outlet with proper netting around the ponds to drain out excess water, thereby preventing fish from escaping in case of overflow.

Agromet advisories for likely impact of Thunderstorm / Gusty Winds / Squally Winds

- Provide mechanical support to horticultural crops and staking or support to vegetables and young fruit plants / fruit-bearing plants to avoid lodging due to strong winds.

Flash flood guidance:

<p>24 hours Outlook for the Flash Flood Risk (FFR) till 1130 IST of 16-07-2025:</p> <p>Low to Moderate flash flood risk likely over few watersheds & neighbourhoods of following Met Sub-divisions during next 24 hours.</p> <p>East Rajasthan - Baran, Jhalawar and Kota districts. West Rajasthan - Churu, Jalor and Pali districts.</p> <p>Surface runoff/ Inundation may occur at some fully saturated soils & low-lying areas over Area of Concern (AoC) as shown in map due to expected rainfall occurrence in next 24 hours.</p>	<p>Product: GFS FFR Timescale: 24-hr Region: 'INDIA' Product Date: 2025-07-15 06:00 UTC Valid Date: 2025-07-16 06:00 UTC</p> 
<p>24 hours Outlook for the Flash Flood Risk (FFR) till 1130 IST of 16-07-2025:</p> <p>Low to Moderate flash flood risk likely over few watersheds & neighbourhoods of following Met Sub-divisions during next 24 hours.</p> <p>Chhattisgarh - Balarampur, Bilaspur, Jashpur, Korea, Mungeli, Raigarh, Surajpur and Surguja districts. East Madhya Pradesh - Anuppur, Damoh, Dindori, Katni, Mandla, Sagar, Seoni, Shahdol and Umaria districts. Odisha - Deogarh, Kendujhar, Mayurbhanj, Sambalpur and Sundargarh districts. Gangetic West Bengal - Bankura, Pashchim Medinipur and Puruliya districts. Jharkhand - Bokaro, Dhanbad, East Singhbhum, Garhwa, Giridih, Gumla, Hazaribagh, Khunti, Koderma, Latehar, Lohardaga, Palamu, Ramgarh, Ranchi, Saraikela, Simdega and West Singhbhum districts.</p> <p>Surface runoff/ Inundation may occur at some fully saturated soils & low-lying areas over Area of Concern (AoC) as shown in map due to expected rainfall occurrence in next 24 hours.</p>	<p>Product: GFS FFR Timescale: 24-hr Region: 'INDIA' Product Date: 2025-07-15 06:00 UTC Valid Date: 2025-07-16 06:00 UTC</p> 

Legends & abbreviations:

- ❖ **Heavy Rain:**64.5-115.5mm; **Very Heavy Rain:**115.6-204.4mm; **Extremely Heavy Rain:** >204.4mm.
- ❖ **Obsy:** Observatory; Automatic Weather Station; **ARG:** Automatic Rain Gauge; **dist:** District; **NH:** National Highway; **KVK:** Krishi Vigyan Kendra; **DVC:** Damodar Valley Corporation; **PTO:** Part Time Office, **Aero:** Aerodrome, **IAF:** Indian Air Force.
- ❖ **Region wise classification of meteorological Sub-Divisions:**
 - **Northwest India:** Western Himalayan Region (Jammu-Kashmir-Ladakh-Gilgit-Baltistan-Muzaffarabad, Himachal Pradesh and Uttarakhand); Punjab, Haryana-Chandigarh-Delhi; West Uttar Pradesh, East Uttar Pradesh, West Rajasthan and East Rajasthan.
 - **Central India:** West Madhya Pradesh, East Madhya Pradesh, Vidarbha and Chhattisgarh.
 - **East India:** Bihar, Jharkhand, Sub-Himalayan West Bengal & Sikkim; Gangetic West Bengal, Odisha and Andaman & Nicobar Islands.
 - **Northeast India:** Arunachal Pradesh, Assam & Meghalaya and Nagaland, Manipur, Mizoram & Tripura.
 - **West India:** Gujarat Region, Saurashtra & Kutch, Konkan & Goa, Madhya Maharashtra and Marathawada.
 - **South India:** Coastal Andhra Pradesh & Yanam, Telangana, Rayalaseema, Coastal Karnataka, North Interior Karnataka, South Interior Karnataka, Kerala & Mahe, Tamil Nadu, Puducherry & Karaikal and Lakshadweep.

LEGENDS

1. अंडमान और निकोबार द्वीपसमूह

2. अरुणाचल प्रदेश

3. असम और मेघालय

4. नागालैंड, मणिपुर, मिजोरम और त्रिपुरा

5. उप-हिमालयी पश्चिम बंगाल और सिक्किम

6. गंगीय पश्चिम बंगाल

7. ओडिशा

8. झारखंड

9. बिहार

10. पूर्वी उत्तर प्रदेश

11. पश्चिम उत्तर प्रदेश

12. उत्तराखंड

13. हरियाणा, चंडीगढ़ और दिल्ली

14. पंजाब

15. हिमाचल प्रदेश

16. जम्मू और कश्मीर और लद्दाख

17. पश्चिम राजस्थान

18. पूर्वी राजस्थान

19. पश्चिम मध्य प्रदेश

20. पूर्वी मध्य प्रदेश

21. गुजरात

22. सौराष्ट्र

23. कोंकण और गोवा

24. मध्य महाराष्ट्र

25. मराठवाड़ा

26. विदर्भ

27. छत्तीसगढ़

28. तटीय आंध्र प्रदेश और यनम

29. तेलंगाना

30. रायलसीमा

31. तमिलनाडु, पुडुचेरी और कराईकल

32. तटीय कर्नाटक

33. आंतरिक उत्तरी कर्नाटक

34. आंतरिक दक्षिणी कर्नाटक

35. केरल और माहे

36. लक्षद्वीप



1. Andaman & Nicobar Islands

2. Arunachal Pradesh

3. Assam & Meghalaya

4. Nagaland, Manipur, Mizoram & Tripura

5. Sub-Himalayan West Bengal & Sikkim

6. Gangetic West Bengal

7. Odisha

8. Jharkhand

9. Bihar

10. East Uttar Pradesh

11. West Uttar Pradesh

12. Uttarakhand

13. Haryana, Chandigarh & Delhi

14. Punjab

15. Himachal Pradesh

16. Jammu & Kashmir and Ladakh

17. West Rajasthan

18. East Rajasthan

19. West Madhya Pradesh

20. East Madhya Pradesh

21. Gujarat

22. Saurashtra

23. Konkan & Goa

24. Madhya Maharashtra

25. Marathwada

26. Vidarbha

27. Chhattisgarh

28. Coastal Andhra Pradesh & Yanam

29. Telangana

30. Rayalaseema

31. Tamilnadu, Puducherry & Karaikal

32. Coastal Karnataka

33. North Interior Karnataka

34. South Interior Karnataka

35. Kerala & Mahe

36. Lakshadweep

SPATIAL DISTRIBUTION (% of Stations reporting)

% Stations	Category	% Stations	Category
76-100	Widespread (WS/Most Places)	26-50	Scattered (SCT/A Few Places)
51-75	Fairly Widespread (FWS/Many Places)	1-25	Isolated (ISOL)



Fog



Heavy Snow



Cold Wave



Heavy Rain



Dust Storm



Cold Day



Very Heavy Rain



Heat Wave



Ground Frost



Extremely Heavy Rain



Warm Night



Thunder & Lightning



Hot Day



Hailstorm



Hot & Humid



Dust Raising Winds



Strong Surface Winds

COLOUR CODED WARNING

No Warning (No Action)

Watch (Be Aware)

Alert (Be Prepared To Take Action)

Warning (Take Action)

Probabilistic Forecast

Terms	Probability of Occurrence (%)
Unlikely	< 25
Likely	25 - 50
Very Likely	50 - 75
Most Likely	> 75

* Red colour warning does not mean "Red Alert", Red colour warning means "Take Action".

Forecast and Warning for any day is valid from 0830 hours IST of day till 0830 hours IST of next day.

For more details, kindly visit <https://mausam.imd.gov.in> or contact: 011-2434-4599

(Service to the Nation since 1875)

DEFINITION/CRITERIA

Rain/ Snow *

Heavy: 64.5 to 115.5 mm/cm *
Very Heavy: 115.6 to 204.4 mm/cm *
Extremely Heavy: > 204.4 mm/cm *

Heat Wave

When maximum temperature of a station reaches $\geq 40^{\circ}\text{C}$ for plains and $\geq 30^{\circ}\text{C}$ for hilly regions
(a) Based on Departure from normal

Heat Wave: Maximum Temperature Departure from normal 4.5°C to 6.4°C .

Severe Heat Wave: Maximum Temperature Departure from normal $\geq 6.5^{\circ}\text{C}$

(b). Based on Actual maximum temperature

Heat Wave: When actual maximum temperature $\geq 45^{\circ}\text{C}$.

Severe Heat Wave: When actual maximum temperature $\geq 47^{\circ}\text{C}$.

(c). Criteria for heat wave for coastal stations

When maximum temperature departure is $> 4.5^{\circ}\text{C}$ from normal. Heat Wave may be described provided maximum temperature $\geq 37^{\circ}\text{C}$.

Warm Night

When maximum temperature remains 40°C

Warm Night: When minimum temperature departure 4.5°C to 6.4°C .

Severe Warm Night: When minimum temperature departure $> 6.4^{\circ}\text{C}$.

Cold Wave

When minimum temperature of a station $\leq 10^{\circ}\text{C}$ for plains and $\leq 0^{\circ}\text{C}$ for hilly regions.

(a). Based on departure

Cold Wave: Minimum Temperature Departure from normal -4.5°C to -6.4°C .

Severe Cold Wave: Minimum Temperature Departure from normal $\leq -6.5^{\circ}\text{C}$

(b) Based on actual Minimum Temperature (for Plains only)

Cold Wave: When Minimum Temperature is $\leq 4.0^{\circ}\text{C}$

Severe Cold Wave: When Minimum Temperature is $\leq 2.0^{\circ}\text{C}$

(c) For Coastal Stations

When Minimum Temperature departure is $\leq -4.5^{\circ}\text{C}$ & actual Minimum Temperature is $\leq 15^{\circ}\text{C}$

Cold Day

When minimum temperature of a station $\leq 10^{\circ}\text{C}$ for plains and $\leq 0^{\circ}\text{C}$ for hilly regions

Based on departure

Cold Day: Maximum Temperature Departure from normal -4.5°C to -6.4°C .

Severe Cold Day: Maximum Temperature Departure from normal $\leq -6.5^{\circ}\text{C}$

Fog

Phenomenon of small droplets suspended in air and the horizontal visibility $< 1\text{km}$

Moderate Fog: When the visibility between 500-200 metres

Dense Fog: when the visibility between 50- 200 metres

Very Dense Fog: when the visibility < 50 metres

Thunderstorm

Sudden electrical discharges manifested by a flash of light (Lightning) and a sharp rumbling sound (thunder)

Dust/Sand Storm

An ensemble of particles of dust or sand energetically lifted to great heights by a strong and turbulent wind.

Frost

Ice deposits on ground

Air temperature $\leq 4^{\circ}\text{C}$ (over Plains)

Squall

A strong wind that rises suddenly, lasts for atleast 1 minute.

Moderate: Wind speed 52-61 kmph

Severe: Wind speed 62-67 kmph

Very Severe: Wind speed > 67 kmph

Sea State

Effect of various waves in the sea over specific area

Rough to very rough: Wind speed 41-62 kmph (22-33 knots) & Wave height 2.5-6 metre

High to very high: Wind speed 63-117 kmph (34-63 knots) & Wave height 6-14 metre

Phenomenal: Wind speed > 117 kmph (> 63 knots) & Wave height > 14 metre

Cyclone

Cyclonic Storm: Wind speed 62-67 kmph (34-47 knots)

Severe Cyclonic Storm: Wind speed 88-117 kmph (48-63 knots)

Very Severe Cyclonic Storm: Wind speed 118-165 kmph (64 - 89 knots)

Extremely Severe Cyclonic Storm: Wind speed 166-220 kmph (90 -119 knots)

Super Cyclone Storm: Wind speed > 220 kmph (> 119 knots)

* Red colour warning does not mean "Red Alert", Red colour warning means "Take Action".

Forecast and Warning for any day is valid from 0830 hours IST of day till 0830 hours IST of next day.

For more details, kindly visit <https://mausam.imd.gov.in> or contact: 011-2434-4599

(Service to the Nation since 1875)

Hot and Humid: When maximum temperatures remain 3°C above normal along with the above normal relative humidity.